

BIG SANDY RURAL ELECTRIC *Cooperative Corporation*

www.bigsandyrecc.com

504 Eleventh Street
Paintsville, KY 41240
(606) 789-4095
(888) 789-7322
7:30 a.m. to 4:30 p.m.



DAVID ESTEPP
BIG SANDY RECC
MANAGER

Stay safe and stay away from substations

You may have read a news story this summer about a man who was electrocuted while apparently attempting to remove copper from a substation in Whitley City.

Substations contain equipment to regulate the voltage of electricity so that we can safely deliver it to your home or business. Typically, substations are surrounded by chain-link fences and barbed wire, and are marked with signs that clearly warn of danger.

The reason for the danger is that substations are filled with power lines, transformers, circuit breakers, and other equipment that carry extremely high voltages of electricity.

Unfortunately, substations have increasingly become targets for thieves attempting to steal materials that are sold for scrap metal. In some cases they remove wires that ground our equipment, protecting it from electrical surges and lightning by giving electricity a safe path to the ground.

As the price of scrap metal has increased, tragic accidents at substations are becoming more frequent, too.

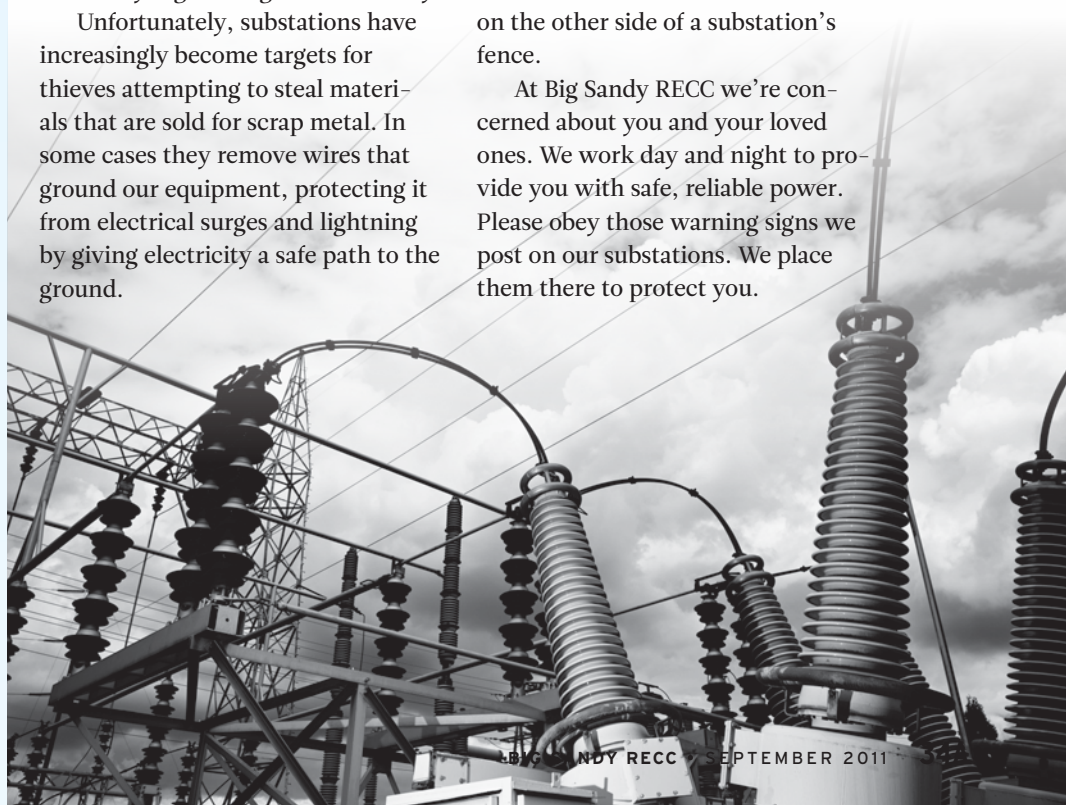
Let me caution you: never for any reason attempt to enter a substation unless you are trained and authorized to do so.

It's not just illegal to enter these sites—it can be deadly.

Substations are necessary parts of the electrical power system, but unless you're a professional technician trained to build, operate or service them, and authorized to enter them, they're exceedingly dangerous.

The materials they contain aren't worth a human life. Neither is an errant kite or baseball that has landed on the other side of a substation's fence.

At Big Sandy RECC we're concerned about you and your loved ones. We work day and night to provide you with safe, reliable power. Please obey those warning signs we post on our substations. We place them there to protect you.



The Kentucky Apple Festival®

Free Downtown Concerts!!!

on the Main Stage at the Johnson County Courthouse
starting at 1:30 p.m. Friday and 10:00 a.m. Saturday

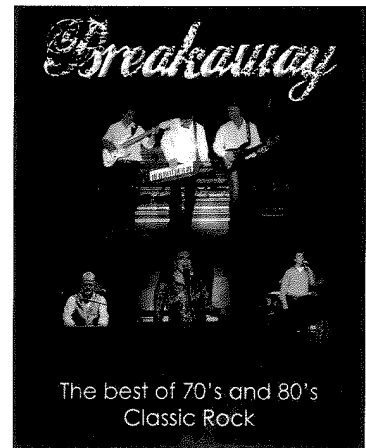


**CONFEDERATE
RAILROAD**

Saturday, Oct. 1, 2011
8:15 p.m.

Also Appearing
Kala DeHart & Rivertown
New River Line
Brittany Taylor
Bluegrass Riot
Rocky Knob Ramblers
Plain Jane
Tyler Stephens
The Big Sandy Singers
Black Powder Express
JCHS Singers and Stage Band
Paintsville High School Stage Band

Go to www.kyapplefest.org
for complete line-up.



The best of 70's and 80's
Classic Rock

Breakaway

Friday, Sept. 30, 2011
8:30 p.m.

FESTIVAL EVENTS

*Food Concessions
Throughout Paintsville*

*Music On The Streets
Friday - Saturday*

SATURDAY, SEPTEMBER 24

Junior Miss Apple Blossom
Pageant - 5:00 p.m.
JCHS Fieldhouse
Miss Apple Blossom Pageant
7:00 p.m. JCHS Fieldhouse

SUNDAY, SEPTEMBER 25

Apple Baby Contest
PHS Gym
Girls - 2:00 p.m.
Boys - 3:30 p.m.

MONDAY, SEPTEMBER 26

Mini-Prince & Princess Contest
5:00 p.m. PHS Gym
Prince & Princess Contest
6:00 p.m. PHS Gym
Little Miss Apple Blossom Pageant
7:00 p.m. PHS Gym
Pre-Teen Miss Apple Blossom Pageant
7:30 p.m. PHS Gym

WEDNESDAY, SEPTEMBER 28

Little Apple Bowl (3 Games)
5:00 p.m. Memorial Field
Amusement Rides Open 6:00 p.m.

THURSDAY, SEPTEMBER 29

Flea Market - City Parking Lot

FRIDAY, SEPTEMBER 30

Arts & Crafts
9:00 a.m. to 9:00 p.m.
First Baptist Church Lot
Paintsville Grade School Lot
& College Street
Flea Market
City Parking Lots
Merchants Market
Court St. From 2nd to 3rd Streets
2nd St. from Court St. to Church St.
School Activities
9:00 a.m. - 11:15 a.m. Courthouse
Apple Arts Awards
Apple Penmanship Awards
O' Fashion Adding Match
O' Fashion Spelling Bee
Quilt Block Contest Awards
11:15 a.m. Courthouse
O' Fashion Costume Contest
Registration 10:30 a.m.
Contest 11:30 a.m.
Courthouse Stage
Terrapin Trot
1:00 p.m. Our Lady of the Mt. School
Karaoke Contest
1:00 p.m. - 5:00 p.m. Paint Creek Park

**AMUSEMENT RIDES
by CASEY RIDES
TWO LOCATIONS
BROADWAY & DOWNTOWN**

**ENJOY THE
WINDOW DISPLAYS!**

DUNKING BOOTH

**EL HASA SHRINE
CLOWNS
TRAIN RIDE**

**AIR METHODS-KENTUCKY
HEALTH NET
HELICOPTERS
BROADWAY**

CLIMBING WALL

**POSTAGE CANCELLATION
PAINTSVILLE POST OFFICE**

MECHANICAL BULL RIDE

EURO BUNGEE RIDE

FANTASY FUN FAIR

**GRADE SCHOOL FOLK DANCE
(JOHNSON COUNTY SCHOOLS)
PORTER ELEM. SCHOOL**

**PUBLIC SERVICE/
INFORMATION BOOTHS
MAIN STREET
& SECOND STREET**

FRIDAY, SEPTEMBER 30 (Continued)

Clogging
6:00 p.m. to 10:30 p.m.
Paint Creek Park
Crank-It-Up
Registration 5:00 p.m.
Citizens Bank Lot - Broadway
Apple Twist Contest
7:00 p.m. - 9:00 p.m.
Ramada Inn
Music on the Street
1:30 p.m. - 8:20 p.m.
Courthouse Stage
Free Concert featuring:
BREAKAWAY
8:30 p.m. - Courthouse Stage

SATURDAY, OCTOBER 1

5 - K Apple Run
Registration - 8:00 a.m.
Mountain HomePlace
Arts & Crafts
9:00 a.m. to 7:00 p.m.
First Baptist Church Lot
Paintsville Grade School Lot &
College St.
Flea Market
City Parking Lots
Merchants Market
Court St. from 2nd to 3rd Streets
2nd St. from Court St. to Church St.
Gospel Sing with Steppin Out On Faith,
Jackson Family, 4 the King, Spiritual
Connection, Ronnie Spriggs and others
Paint Creek Park - 10:00 a.m. - 6:00 p.m.
Auto Shows
Antique, Corvette and Street Machines
Registration Till Noon
Citizens Bank - Broadway
Bike Show
Cruising and Touring Bikes
Registration 8:00 a.m. - 12:00 Noon
Broadway & 12th Street
Apple Festival Parade
2:00 p.m.
Music on the Street
10:00 a.m. - 8:00 p.m.
Courthouse Stage
Free Country Music Show featuring:
CONFEDERATE RAILROAD
8:15 p.m. - Courthouse Stage
Downtown Square Dance
6:30 p.m. - 10:30 p.m.
Paint Creek Park

Above Schedule Subject To Last-Minute Changes

Your Co-op Connections Card

The Co-op Connections Card puts you in touch with savings at more than 20,000 businesses and provides savings of up to 60 percent on prescriptions. It can also put you in touch with these close-to-home getaways.

Drury Hotels - Drury provides clean rooms, friendly service and a great value at 130 hotels in 20 states. Extras include a free hot breakfast, free wireless Internet, free local and long-distance calls, and much more. Co-op Connections Card members save \$10 off standard room rates, plus the 3rd and 4th occupants stay free. Make reservations at www.druryhotels.com and use promotion code 319078 or call 1-800-DRURYINN and ask for the "Co-op Connections Member Rate."

SOBONGO - If you're looking for the best deals on gaming consoles, LCD TVs, kitchen appliances, laptops, and more, SOBONGO offers thousands of products at great prices and card holders can take \$5 off a \$50 or more purchase with coupon code "cdeal5," or \$10 off a \$100 or more purchase with coupon code "bigdeal10." Shop online at www.sobongo.com or call (800) 762-6646.

InkOasis.com - Ink Oasis carries a large selection of printer ink, ribbons, and toner cartridges, as well as mailroom supplies, printer paper, labeling products, and much more. Card holders receive an additional 5 percent savings off prices plus free shipping on orders over \$75.

Go to www.InkOasis.com and enter coupon code "touchstone" when you place your order.



Failure to notice overhead power lines could be a **deadly oversight.**



TLC

Teach what you know.
Learn what you need to.
Care enough to share it.

Each year, people are killed or injured when their equipment contacts overhead power lines.

Make sure to stay 10 feet away from lines—above, below, and to the side.

Learn more about staying safe around power lines at www.SafeElectricity.org.



BOARD OF DIRECTORS

Wade May
Chairman

Danny Wallen
Vice Chairman

Kelly Shepherd
Secretary-Treasurer

Bill Maxey
Greg Davis
Robert Moore

Attorney
A.A. Burchett

EMERGENCIES/ OUTAGES

(Nights, Weekends & Holidays)

Toll Free (888) 789-7322

learn the

LINGO

What is SEPA?

SEPA is the Southeastern Power Administration, a regional federal agency that markets power generated at hydroelectric plants operated by the U.S. Army Corps of Engineers. Our co-op obtains power that is generated at dams on Lake Cumberland and Laurel Lake through SEPA.



LAST WEEKEND, I SEALED MY AIR DUCTS AND MY WALLET.

And boy, is it paying off. By sealing all the air ducts in my home I started keeping a lot more air and money inside it. About \$177 per year to be more exact. What can you do? Find out how the little changes add up at TogetherWeSave.com.

 **Big Sandy RECC**
A Touchstone Energy Cooperative

BIG SANDYRECC.COM
TOGETHERWESAVE.COM